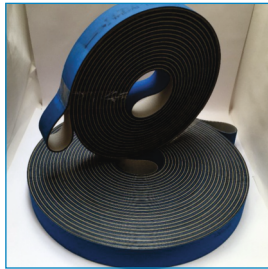
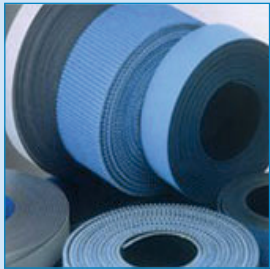


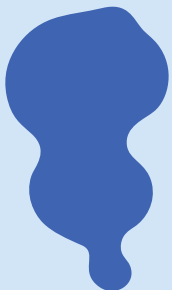


MSB



Textile Industries

...more than just Power Transmission



NITTA



Nitta Flat Drive Belts

For the Textile Industries

With decades of experience in manufacturing a complete range of flat belts, NITTA can meet the needs of customer's current and future requirements with belts, that can be relied upon to drive the most modern textile machinery in the world.


With our state-of-the-art production process and equipment, NITTA focuses on the critical factors when designing a quality product that can ensure a stable performance with accurate spindle revolution, maximized lifetime and minimized noise emission and power loss.

Meeting the modern industry standard with ISO approval, NITTA is proud to present its highly developed product range.

Belt Construction - Features - Applications

Type	Construction	Main Feature	Main Applications
LA – 3S L – 500 LA – 750S MA – 1500S LA2 – 1800S TM – 18SEH NSP – 6403A		High grip top rubber layer and most resistant bottom rubber layer for various conditions	Common drive belts and tangential for various machinery
TFL – 6S TFL – 10S TFL – 12S TFL – 15S TFL – 18S		Taffeta pattern on top rubber layer as spindle side. Bottom rubber layer for high grip as pulley side.	General tangentials
TFL – 15E – 20 TFL – 15E – 20R TFL – 15E – 25 TFL – 22E – 26 TLA – 30E – 30		Less Power Consumption Easy to Make Endless, Low Noise, Shorter Take-up	Card, draw frame, ring spinning, OE & Tangential belt
M – 1000GS MB – 1000GSR		Blue rubber high grip. Black rubber high resistance.	Ground tangentials. For OE-spinning machines
HUS – 500 TC STC TA – S6 GTD SG – 500		Non stick surface for cotton.	Comber.
SE – A – PB SE – B – PB SE – D – PB SE – A – PSS SE – B – PSS SE – D – PSS SE – F – 100SBU		Seamless ground belts for precise speed. Highest bending resistance.	Drum drive in winding machines. Combing roller drive in OE-spinning machines.

Belt Specifications

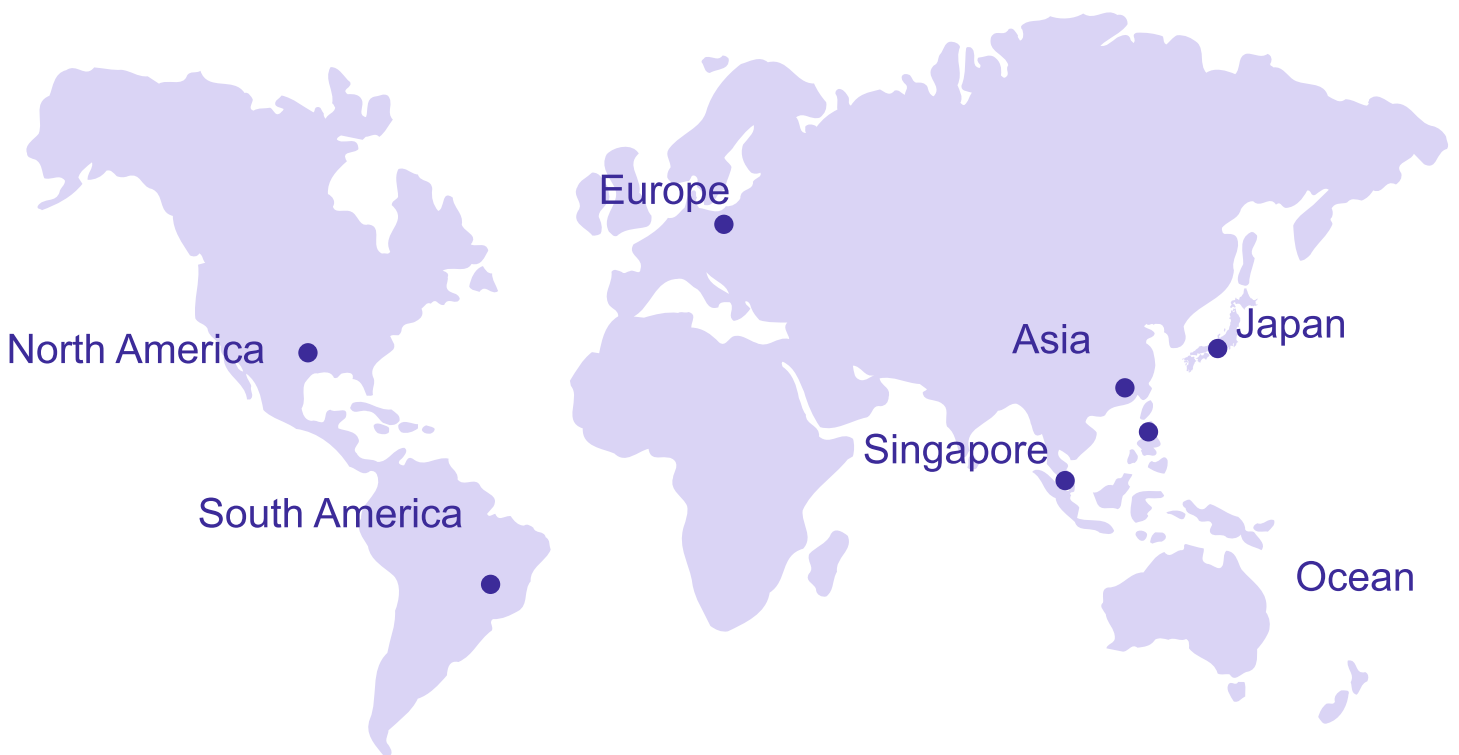


Type	Thickness (mm)	Min. Pulley Dia (mm)	Specific Tension at Standard Elongation (N/mm)
L – 500	1.55	50	7.5
LA – 750S	2.25	75	11.3
MA – 1500S	3.5	150	30.0
TM – 18SEH	3.85	175	34.0
NSP – 6403A	3.0	150	11.2
TFL – 6S	2.25	60	11.5
TFL – 10S	2.6	100	19.5
TFL – 12S	2.85	125	24.5
TFL – 15S	3.1	150	30.0
TFL – 18S	3.35	175	34.0
TMG – 1500S	3.7	150	30.0
TFL – 15E – 20	2.0	40	15.0
TFL – 15E – 25	2.5	50	15.0
TFL – 22E – 26	2.6	50	22.0
TLA – 30E – 30	3.0	70	30.0
M – 1000GS	2.6	100	19.5
MB – 1000GSR	2.6	100	19.5
HUS – 500	1.45	40	3.8
TC	1.40	40	0.8
STC	1.35	25	1.0
TA – S6	0.9	25	0.7
GTD	1.45	25	1.1
KSG – 250	0.85	20	1.5
SG – 500	1.1	50	7.5
SE – A – PB	1.2	15	14.7
SE – B – PB	1.6	25	14.7
SE – D – PB	1.7	35	26.4
SE – A – PSS	1.6	15	14.7
SE – B – PSS	2.0	25	29.4
SE – D – PSS	2.3	35	58.8
SE – F – 100SBU	0.8	10	7.84

*Value after 200 hrs running in.



NITTA



NITTA CORPORATION

4-4-26 Sakuragawa Naniwa-ku Osaka 556-0022 Japan Phone: 06-6563-1221 Fax: 06-6563-1222 www.nitta.co.jp



PLOT NO. A33, TTC INDL. AREA, THANE-BELAPUR ROAD, MIDC, KHAIRNE, NAVI MUMBAI – 400710.
E-mail: sales@mangalsingh.com Tel. No.: +91 22 2778 1170 / 2778 1689 / 2778 0668
Website: www.mangalsingh.com